



# BRIDGE TO Opportunity

2022/2023 IMPACT REPORT

# contents:

Executive Director Letter	1
High Milestones	3
2022/2023 Impact	4
How We Invest	5
Stories of Impact: Sadler Health Center	6
Stories of Impact: SACA's Tec Centro	8
Equity Statement	10
Stories of Impact: Real Life Community Services	11
Stories of Impact: Lancaster Science Factory Sky Bridge	12
Stories of Impact: Landis Place on King	14
Bridge to the Future	16
Extraordinary Give	18
Impact Snapshots	19
Community Partners	20

## OUR MISSION

# Bridge to Opportunity

High Foundation's mission is to improve the lives of people who live and work in Lancaster City, Lancaster County, and the communities in which High companies provide investment and employment. Our objective is to enact positive, systemic change that will last beyond our lifetimes.

We support and champion projects which enable the dignity, diversity, equality, and inclusion of all people and generate beneficial social and environmental impact. The Foundation engages those sharing a common interest in eliminating poverty and creating a vibrant, thriving city.



## What if we could do more?

"What if we could do more?" The words of our benefactor S. Dale High have been stirring in our hearts this year as we watch his vision come to life.

Since the historic transfer of ownership of High Industries to High Foundation just one year ago, we have embarked on a season of visioning and strategic planning to further hone our priorities. With every step we take in this journey, we are not just planning for tomorrow; we are shaping the legacy that we leave behind. We know that our strategic decisions today will influence the lives of countless individuals in the future.

On the pages of this report, you will find stories of celebration—the lives that have been changed and the doors that have been opened to a brighter future, transforming our communities one individual at a time.

We are sincerely thankful for the dedication of those doing the hard work. It's our community partners who are the heartbeat of High Foundation. Through their efforts, we continue to take significant steps toward impacting lives through transformative initiatives. We are grateful for the work they put forth every day to address pressing issues, provide comfort, and work toward a healthier community.

The journey ahead is full of anticipation and excitement. We are confident in our partners, dedicated to our mission, and we know that our collective efforts will lead to a brighter future for all.

"What if we could do more?" We can and we will.



Robin D. Stauffer  
Executive Director



## Board of Trustees

**S. Dale High**  
*Chairman of the Board*

**Suzanne M. High**  
*Vice Chair*

**Michael W. Van Belle**  
*Treasurer*

**Thomas T. Baldrige**

**Steven D. High**

**Gene P. Otto**

**Hilda A. Shirk**

**Jordan S. Steffy**

**Carl J. Strikwerda**





*“I have come to the conclusion that the most effective way to drive change is at the local level...informed by real people.”*

*- S. Dale High*

### **DISTINGUISHED CITIZEN OF THE COMMONWEALTH AWARD: S. DALE HIGH**

In April 2023, S. Dale High received the Pennsylvania Society’s Distinguished Citizen of the Commonwealth Award. Dale is the first Lancasterian to receive the award since it was established in 1976, honoring his contributions to the economic progress of Pennsylvania and commending Dale’s use of values-based leadership to develop High companies, growing the companies in new strategic directions.

*The Pennsylvania Society is a nonprofit organization that honors achievement, rewards excellence, and promotes goodwill across the Commonwealth of Pennsylvania. Learn more at [pasociety.org](https://pasociety.org).*

*Servant leadership has been the cornerstone of S. Dale High’s philosophy and of High Foundation since its inception in 1980. High Foundation was created with the conviction that the hard work and good fortunes of the family businesses must contribute to the growth and well-being of the people and communities in which High companies operate. S. Dale High and the High family have generously invested over \$30 million into grants, programs, and initiatives through High Foundation, contributing to the quality of life, the environment, and culture in our communities.*

## **HIGH MILESTONES**

- High Welding Company is born on Lemon Street in Lancaster City.

1931

S. Dale High joins the family business.
- S. Dale High began leading High Industries Inc. as Chairman of the Board, President & CEO.

1963

Old Town in Lancaster City is saved from destruction and revitalized by S. Dale High and other investors.
- High Foundation is formed.

1977

High Foundation establishes college scholarship program for coworkers’ high school students.
- High Foundation is a major donor of the High Library at Elizabethtown College.

1980

High Foundation establishes the Essence of Humanity Award to celebrate individuals who exemplify the human spirit.
- High Foundation is a major donor of the High Library at Elizabethtown College.

1983

S. Dale High is named Founder of High Center for Family Business at Elizabethtown College.
- High Foundation establishes the Essence of Humanity Award to celebrate individuals who exemplify the human spirit.

1990

The High family purchases 27 West Lemon Street in the City of Lancaster, the birthplace of High Welding Co.
- High companies, development partner, open Lancaster Marriott at Penn Square Hotel and Convention Center.

1995

S. Dale High Leadership Center opens, home to High Family Office and High Foundation.
- High Foundation becomes annual Presenting Sponsor of Lancaster County Community Foundation’s Extraordinary Give

2001

High Foundation establishes \$65 million Donor Advised Fund with Lancaster County Community Foundation.
- High Industries ownership is transferred to High Foundation.

2009

High Foundation establishes \$65 million Donor Advised Fund with Lancaster County Community Foundation.
- High Industries ownership is transferred to High Foundation.

2017

High Foundation establishes \$65 million Donor Advised Fund with Lancaster County Community Foundation.
- High Industries ownership is transferred to High Foundation.

2021

High Foundation establishes \$65 million Donor Advised Fund with Lancaster County Community Foundation.
- High Industries ownership is transferred to High Foundation.

2022

High Foundation establishes \$65 million Donor Advised Fund with Lancaster County Community Foundation.
- High Industries ownership is transferred to High Foundation.

2023

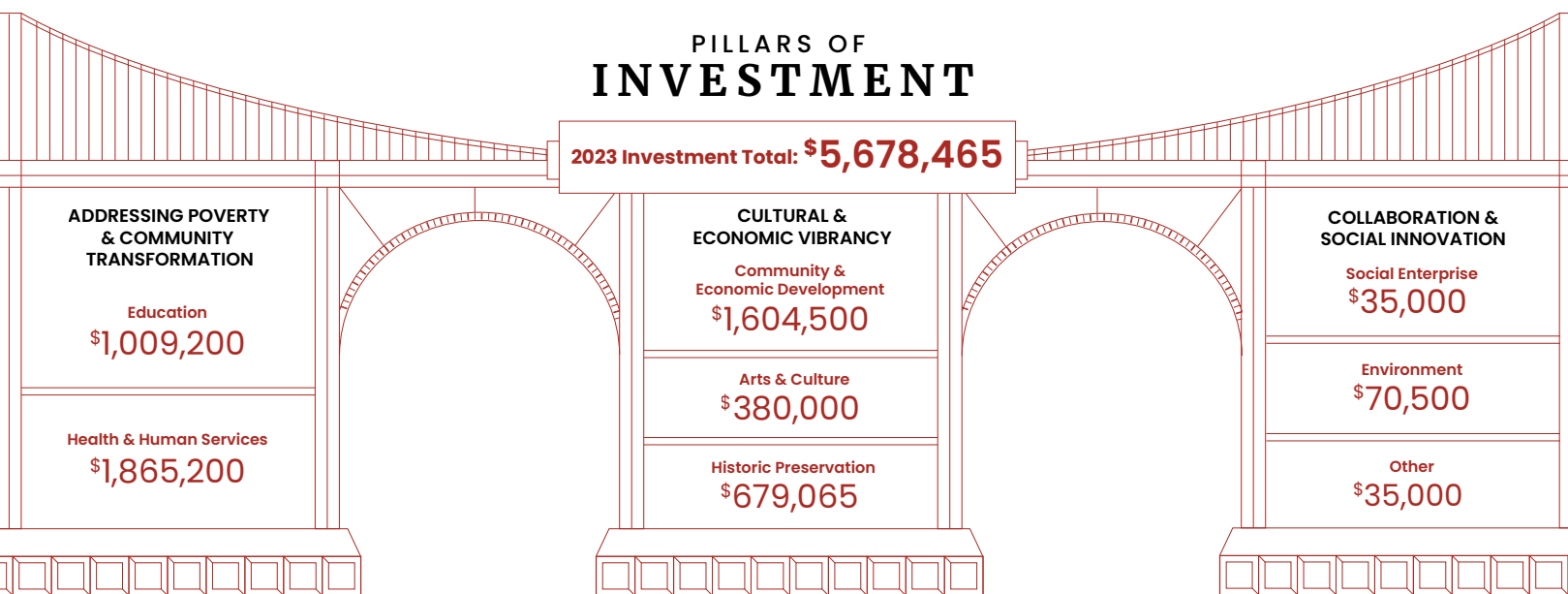
High Foundation establishes \$65 million Donor Advised Fund with Lancaster County Community Foundation.



# 2022/2023 Impact

One year into the transition of High Industries ownership to High Foundation, we are pleased to celebrate the greater impact we are able to have in Lancaster County and other areas where High does business.

We are excited about the increased opportunity for impact and look forward to further investment in signature projects that will have a lasting impact for generations to come.



## FUNDING CATEGORIES



### GRANTS

Funding awarded annually through online application



### SOCIAL INITIATIVES

Funding of groundbreaking, collaborative community initiatives



### SCHOLARSHIPS

College tuition awards for children of High coworkers



### SIGNATURE PROJECTS

Funding and partnership in visionary and catalytic collaborations to eliminate underlying societal barriers to opportunity

# How We Invest

We are dedicated to disrupting the cycle of poverty and making access to opportunity possible for all members of our community.

To accomplish this goal, we invest in non-political nonprofit 501(c)3 organizations who endeavor to do the same and align with our core criteria: operate in the communities where High companies have a business presence; have organizational missions aligned with High Foundation's Pillars of Investment and fall within our areas of focus; and demonstrate a belief in and forward-thinking mindset for changing systemic biases and institutions that inhibit diversity, equity, and inclusion in all areas of life.





Students in the Health Sciences program at SACA's Tec Centro

# STORIES OF IMPACT

From health and human services to science and education, High Foundation is proud to partner with organizations leaving a lasting impact on the places where we live and work.

## STORIES OF **IMPACT**

# Sadler Health Center

Sadler Health Center is a federally qualified health center that has provided affordable and comprehensive medical care to underserved communities for nearly 100 years. In Cumberland and Perry Counties, Sadler offers medical and dental care, pediatric services, behavioral health services, and pharmacy access, among many other programs.

*“Without the contribution from High Foundation and other friends that supported our vision, our project would not have advanced as much as we are seeing it today.”*

*-Manal El Harrak, CEO of Sadler Health Center*

“More than 88 percent of these residents are underserved and have no access to care. [There are] definitely a growing number of residents that do not have access to quality healthcare,” said Manal El Harrak, CEO of Sadler Health Center. “[The pandemic] has amplified the statistics and dire need that exists within this designated area.”

Sadler’s medical experts worked at the forefront of addressing public health priorities like the opioid epidemic and COVID-19, providing an excellent standard of care to their patients. Recognizing the growing need

for services, Sadler Health Center is opening a new location in Mechanicsburg, Pennsylvania. The expansion will provide comprehensive and affordable care to an additional 8,000 patients each year.

“We pride ourselves in our ability to provide high-quality, affordable health care. Without the contribution from High Foundation and other friends that supported our vision, our project would not have advanced as much as we are seeing it today as we’re nearing completion,” El Harrak said.

Sadler Health Center will begin serving a limited number of patients at the Mechanicsburg location in October 2023, with the center being fully operational in early 2024.





STORIES OF **IMPACT**

# SACA's Tec Centro

With two locations in Lancaster City and connections with local community colleges and trade schools, SACA's Tec Centro is a local leader in bilingual education, job training, and skills development.

Since its establishment in 1973, the Spanish American Civic Association (SACA) has helped the Latino population assimilate to life in Lancaster. Fifty years after its founding, SACA has expanded its programming to serve people of all ages, ethnicities, and abilities, including people looking for a fresh start in the job market.

Under the skillful leadership of its Director Marlyn Barbosa, Tec Centro creates pathways for participants to find careers in high-demand jobs. Tec Centro boasts a 70 percent job placement rate after students complete their

training, with an average hourly wage of \$19.64 per hour. Funding from High Foundation supports program scholarships for students and supplements the cost of program operations, creating a learning environment where participants can thrive.

"Everything SACA does is centered around making resources available and easily accessible to marginalized communities in our neighborhoods," said Kyle Armor, Chairman of the Board for SACA.

SACA's ever-growing list of programs and services center around a singular mission: To uplift and restore marginalized communities through human, economic, and social services—all while celebrating the various cultural identities that make Lancaster a strong and vibrant place.



*"My vision for Tec Centro is for this impactful program to continue to impact the lives of the marginalized community we serve in positive ways that change and transform lives for the betterment of the entire Lancaster community."*

*— Jose R. Lopez, CEO of SACA*





## We Work for Equity

A world in which all people have access to opportunity is the world we want to help build. Our investments and initiatives further the goal of embracing diversity, promoting mutual respect, and broadening opportunity for everyone.

*High Foundation is committed to leading while learning what it means to be a diverse, equitable, and inclusive organization. While this is an ongoing and evolving process, we're proud of the strides we've made and will continue to work toward a more equitable future for all.*

### STORIES OF **IMPACT**

## REAL Life Community Services

REAL Life Community Services is a nonprofit organization in Denver, Pennsylvania, connecting people to hope through partnerships, collaboration, and relationships. Like so many communities nationwide, Denver struggles to provide enough affordable housing for people in the area.

In 2021, REAL Life Community Services acquired an old furniture store in Downtown Denver. They converted the space into apartments for people struggling to afford a place to live.

"High Foundation has been an incredible partner with REAL Life Community Services," Executive Director Rod Redcay said. "They have

been a huge advocate for REAL Life and for affordable housing. It was very rewarding for us to see them come on board and support this great effort."

Moving people into an apartment unit is just the beginning. Once placed, a REAL Life Community Services social worker provides case management support and connects them to food, clothing, and local resources to help them get ahead.

"Affordable housing is just a small piece of the greater picture of the need," Rod said. "We provide resources to help individuals not only get ahead but to thrive."







STORIES OF **IMPACT**

# Lancaster Science Factory Sky Bridge

As STEM education became a top priority, Lancaster Science Factory began dreaming of an exhibit that would capture the minds of curious learners in Lancaster County. The result was an awe-inspiring 25-foot Sky Bridge featuring 35 climbable panels held in tension by gravity, a holographic reflective finish, and bird's eye view of the Hall of Science.

*“Climbing the Sky Bridge is an epic experience, a rite of passage. It’s the hook to capture a kid’s imagination and elevate their interest in STEM.”*

*– Emily Landis, Executive Director of Lancaster Science Factory*

High Foundation was proud to contribute to this innovative project as the lead sponsor, creating an iconic exhibit that would help students grasp the foundational principles of STEM at such a formative age.

“We worked with High Foundation to develop the design. It was truly a partnership. We have had an amazing partnership for many years that’s only grown stronger,” Emily said.



*Executive Director Emily Landis*

In addition to funding the Sky Bridge, High companies have contributed significantly to Lancaster County’s student education through BridgeMania, a summer camp program where students learn how to weld steel and build bridges through hands-on projects. High Steel’s Vice President of Technical Services, Ronnie Medlock, is on the Board of Lancaster Science Factory and donates his time to BridgeMania, inspiring students with a tour of the High companies’ campus.

With High Foundation’s support, Lancaster Science Factory is rising to meet the high demand for hands-on STEM education and create a space where students from across Pennsylvania can access transformative educational experiences.

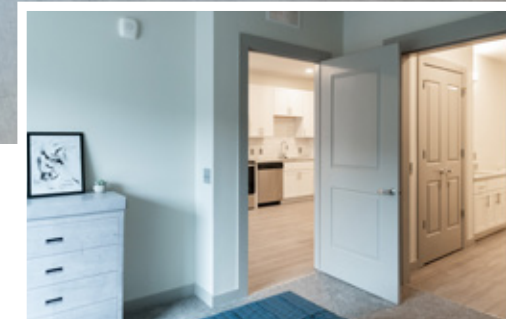


# Landis Place on King

Offering 79 apartment units in the heart of Lancaster City, Landis Place on King seeks to transform care for people 55 and over. Unlike traditional continuing care models, Landis Place on King is comprised of rental apartments with no entrance fee or buy-ins required to become a resident. With support from High Foundation and other community partners, Landis Place on King has designated 10 apartment units as affordable housing, lowering the rental rate to serve even more residents.

Committed to helping folks age in place, Landis Place on King provides community-based and in-home services to help individuals with housekeeping, transportation, and fostering connections between residents. Conveniently located in Downtown Lancaster, residents are encouraged to become actively involved in the thriving community.

“There are people out and about, supporting neighborhood businesses, going to Lancaster Central Market, restaurants, and stores nearby. It’s great to see the neighborhood there thrive,” President and CEO of Landis Communities Larry Zook said.



*Interior of residences at Landis Place on King*


Making a positive environmental impact is a crucial part of the mission at Landis Place on King. With strategic efforts in energy efficiency and the construction of a flourishing green roof, innovation is taking place.

“One of our guiding values is stewardship,” Larry said. “A lot of our residents are grandparents, and they care about what kind of world they’re leaving their grandchildren and great-grandchildren.”

The team at Landis Place on King is grateful to High Foundation for contributing to the project financially, as well as with constant inspiration and encouragement.

“We truly believe it would not be possible to bring projects like this to fruition without strong partners like High Foundation,” Larry said.





# Bridge to the Future

As we reflect on this past year, we cannot help but be excited by the momentum propelling us forward. The future holds promise like never before, and we are eager to see and be part of the work of our partners. With a heart of service we envision building bridges to opportunity for individuals and communities, striving for an equitable world of beauty, prosperity, and peace.

Servant leadership is our compass, guiding us on a journey full of potential, innovation, and opportunities that can help to shape the future of our communities. A spirit of collaboration, unwavering excellence, and enduring hope are integral components of our roadmap.

We believe in cultivating an environment that encourages collaboration, nurtures creativity, and embraces diversity, ensuring we are ready for whatever the future may bring. And we are committed to helping our communities thrive for generations to come.

## We continue to be excited about:

- Investing in spaces that are safe, beautiful, and accessible
- Caring for our environment and being good stewards of the earth
- Celebrating our history and learning from the past





# Partners in Giving Extra

Since 2012, High Foundation has been proud to support the Lancaster County Community Foundation's signature event, the Extraordinary Give. Over the last 11 years, community members have raised \$92 million for the causes they care about.

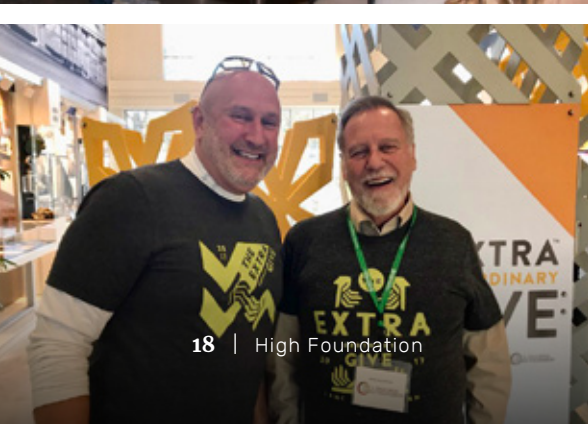
The funds generated from ExtraGive have impacted community benefit organizations across all sectors, from health and education to hunger and poverty alleviation.

As Presenting Sponsor, High Foundation partners with the Lancaster County Community Foundation to promote ExtraGive so that everyone can get involved and feel confident in their ability to make a difference.

We are proud to partner with the team at LCCF to celebrate this annual day of giving when every member of our community can invest in what matters to them.

*“When given the opportunity to elevate the event to new heights by joining as a second Presenting Sponsor, High Foundation did not hesitate. Since that time, the ExtraGive has soared to more than \$10 million a year for five straight years.”*

*- Sam Bressi, President and CEO, Lancaster County Community Foundation*



# Impact Snapshots

Here's a look at just a handful of our 2022-2023 partner projects that we have been honored to support.

## Samaritan Counseling Center

We provided funding to help Samaritan Counseling Center screen over 2,700 students in local school districts for anxiety, depression, and thoughts of suicide through their TeenHope program.

>> [samaritanlancaster.org](http://samaritanlancaster.org)

## LancasterHistory

We supported the creation of the Thaddeus Stevens & Lydia Hamilton Smith Center for History & Democracy, an exhibit that tells incredible stories of local residents leaving lasting historical impact.

>> [lancasterhistory.org](http://lancasterhistory.org)

## The Factory Ministries

We provided funding to renovate the organization's historic building, creating a gymnasium where people in Eastern Lancaster County can gather, learn, and grow.

>> [thefactoryministries.com](http://thefactoryministries.com)

## Central PA Food Bank

We supported the organization's efforts to survey people experiencing hunger in Lancaster, using the feedback to strengthen their programming and feed more families facing food insecurity.

>> [centralpafoodbank.org](http://centralpafoodbank.org)

## New Hope Ministries

Our funding helped purchase and open an accessible food pantry and social service office that meets the needs of underserved families in York County.

>> [nhm-pa.org](http://nhm-pa.org)

## Schreiber Center for Pediatric Development

We provided funding to build a new therapy space and convert existing portions of the building to new treatment areas, allowing Schreiber to serve more children.

>> [schreiberpediatric.org](http://schreiberpediatric.org)

## Ebenezer Baptist Church

We provided funding to renovate bathrooms in the church's homeless shelter, providing a more comfortable space for unhoused guests.

>> [ebclancaster.org](http://ebclancaster.org)

## Lancaster Area Habitat for Humanity

Our funding helped expand construction and volunteer capacity, as well as acquire more viable properties to be transformed into affordable homes for people struggling to find stable housing.

>> [lancasterlebanonhabitat.org](http://lancasterlebanonhabitat.org)



# Special thanks to our community partners

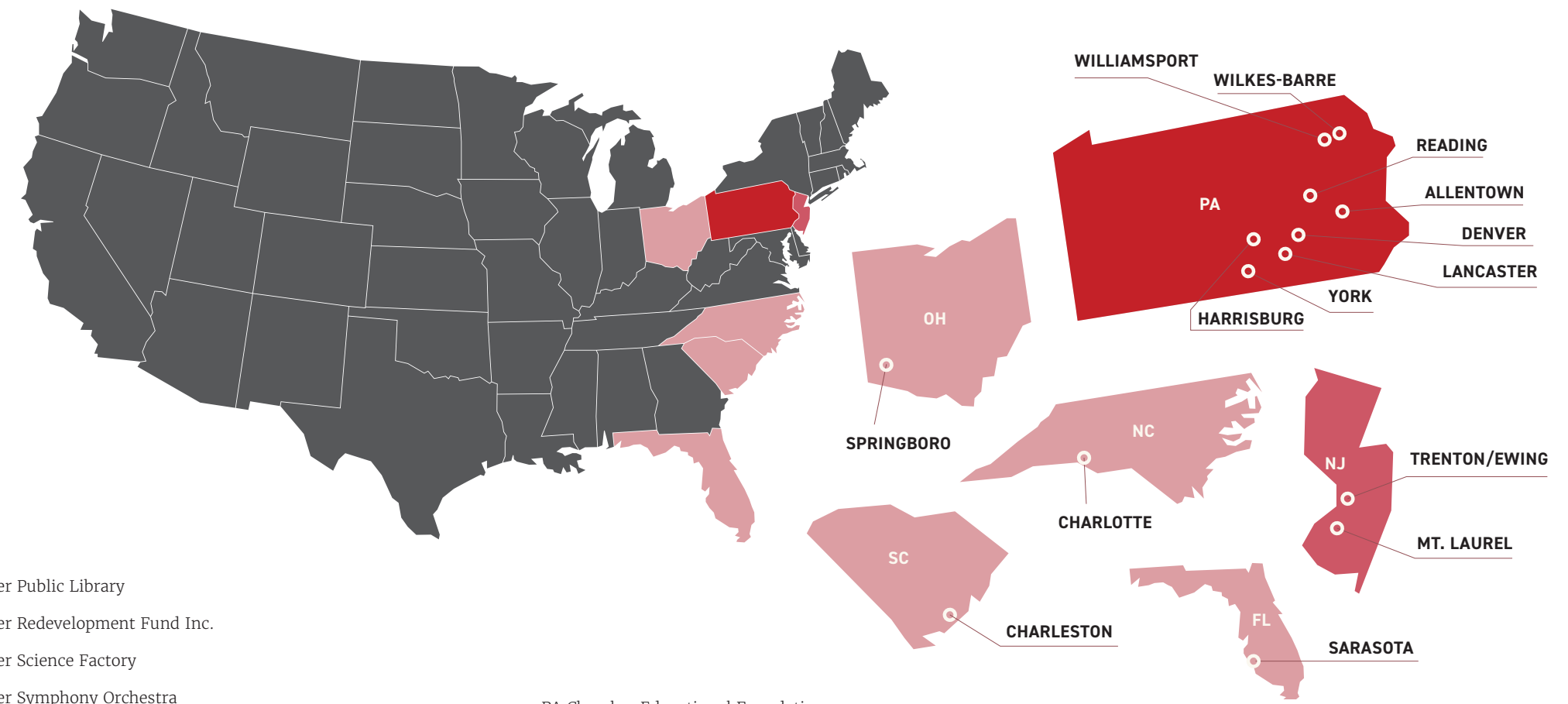
- Advoz
- Aavidum
- Alvernia University
- Anchor Lancaster
- ASSETS of Lancaster
- Bench Mark Program
- Bethel African Historical Services
- Blessings of Hope
- Bridge of Hope
- Bright Side Opportunities Center
- Central Market Trust
- Central Pennsylvania Food Bank
- Chesapeake Bay Foundation
- Chestnut Housing Corporation
- Children Deserve a Chance Foundation
- Children's Dyslexia Center of Lancaster
- Children's Home of York
- Children's Museum of Lancaster
- Church World Service
- City of Lancaster, PA
- Clothes That Work
- Communities in Schools of PA
- Community Action Committee, Lehigh Valley
- Community Action Partnership
- Community Basics Inc.
- Community First Fund
- CrossNet Ministries
- DAIS Partners
- East Chestnut Street Mennonite Church
- Eastern Mennonite University
- Ebenezer Baptist Church
- Elizabethtown College
- Franklin & Marshall College
- Friendship Community
- Garden Spot Village
- Girls on the Run of Lancaster
- Good Neighbors Inc.
- Good Samaritan Services
- Greater Lycoming Habitat for Humanity
- Harrisburg Area Community College Foundation
- HDC MidAtlantic
- Historic Preservation Trust of Lancaster
- Hourglass Foundation
- Humanitarian Social Innovations
- Junior Achievement of South-Central PA
- Kathy's Circle of Friends Inc.
- Lancaster Area Habitat for Humanity
- Lancaster Bible College
- Lancaster Conservancy
- Lancaster Country Day School
- Lancaster County Community Foundation
- Lancaster County Food Hub
- Lancaster County Project for the Needy
- Lancaster Downtowners
- Lancaster Mennonite Historical Society
- Lancaster Mennonite School

- Lancaster Public Library
- Lancaster Redevelopment Fund Inc.
- Lancaster Science Factory
- Lancaster Symphony Orchestra
- Lancaster Township Fire Department
- Lancaster-Lebanon Education Foundation
- LancasterHistory
- Landis Communities
- Leadership Lancaster
- Leg Up Farm
- Light House Rehabilitation Center
- Long's Park Amphitheater Foundation
- Luthercare
- Mennonite Central Committee
- Mental Health America of Lancaster County
- Milagro House
- Mt. Hope Nazarene Retirement Community
- New Hope Ministries
- New Person Ministries

- PA Chamber Educational Foundation
- PA College of Art and Design
- Penn State THON
- Penn State University
- Power Packs Project
- Prima Arts Inc.
- REAL Life Community Services
- RegenAll
- Sadler Health Center
- Samaritan Counseling Center
- Schreiber Center for Pediatric Development
- SCORE Lancaster - Lebanon
- Solanco Neighborhood Ministries
- Spanish American Civic Association
- START
- Teen Challenge Training Center
- Tenfold

- The Clinic for Special Children Inc.
- The Factory Ministries
- The M. S. Hershey Foundation
- United Way of Lancaster County
- WellSpan Philhaven
- Welsh Mountain Health Centers
- Welsh Mountain Home
- YMCA of the Roses
- York County Food Bank
- YWCA of Lancaster

**100+**  
**Partners**  
**ACROSS 14 CITIES**  
**AND 6 STATES**







1861 William Penn Way  
Lancaster, PA 17601

[highfoundation.org](http://highfoundation.org)

Follow us on social:

